

Metro Vancouver Regional GPS Service

George Liu, P.Eng., M.Sc., CLS
GPS Coordinator

Engineering and Construction Department,
Engineering Services and Technical Support Division

Presented to Canadian Institute of Geomatics, March 12, 2009



metro
vancouver

www.metrovancouver.org

Background

- *The Regional GPS was established in 2004 at member municipalities' request and in partnership with the Crown Registry and Geographic Base of the BC Government.*



metro
vancouver

Purpose

- *To provide a highly consistent real-time GPS based geo-spatial reference system in the Metro Vancouver that supports surveying, engineering, mapping, Geographic Information Systems, and other positioning activities.*



metro
vancouver

What is GPS Service?

- A network of five continuously operating GPS Active Control Points (ACPs) where GPS corrections are generated and transmitted in real-time to Service users.
- An authorized service users with a high-end GPS receiver and a wireless handset can achieve highly accurate and regionally consistent positions in real-time.



metro
vancouver

Why Use MV GPS Service?

- Consistent with Provincial Standards
Horizontal - NAD83(CSRS)
Vertical - CGVD28_{GVRD} Datum
- Category I Certified
 "Legal Surveys must be integrated with active or passive geodetic control monuments...."
 "Active Control Point means a Category I GPS base station..."

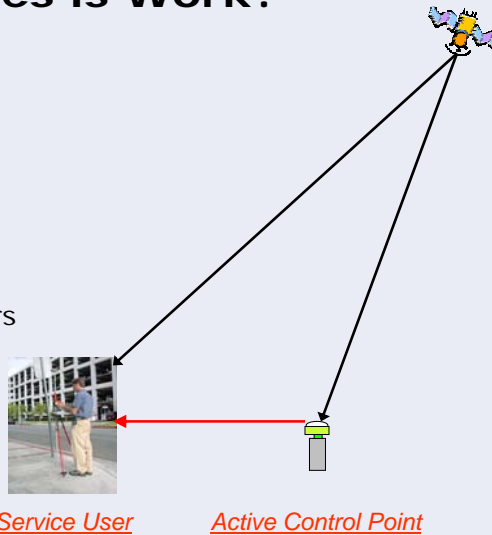


metro
vancouver

BCLS – General Survey Instruction Rules

How does it Work?

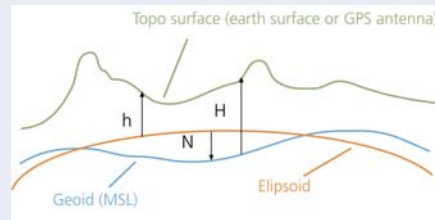
- An Active Control Point occupies a known location, computes the error or corrections, and transmits to Service Users over mobile Internet.



metro
vancouver

Ellipsoidal vs Geodetic Elevations

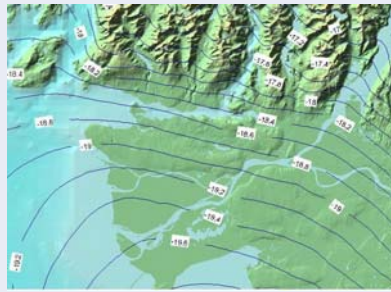
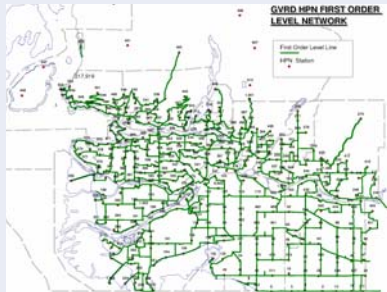
- GPS provides ellipsoidal elevations (h).
- A Geoid Model is needed to calculate geodetic elevations (H) by applying the offset (N),



metro
vancouver

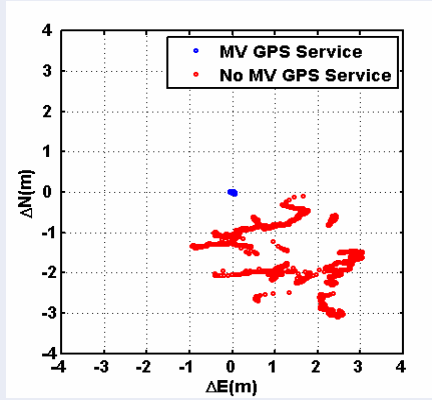
Geoid Model

- The Geoid Model was derived from the 2003 Metro Vancouver funded GPS and levelling survey projects and is available to the public.



metro
vancouver

How Accurate?

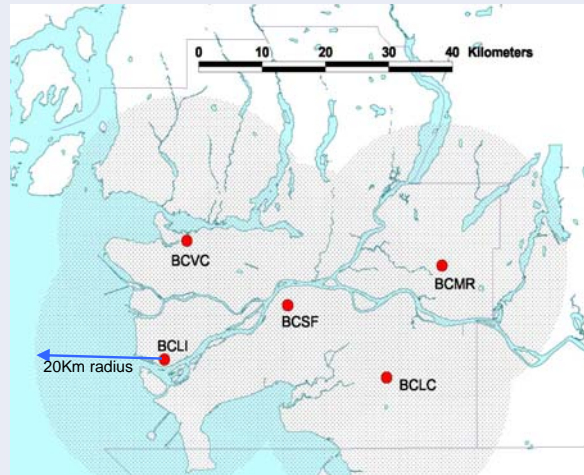


4cm horizontal @ 95%
 6cm vertical @ 95%
 Within 20Km from an Active Control Point



metro
vancouver

What is the Service Coverage?



metro
vancouver

What Do I Need?

A Subscription Plan –

- In an effort to offset the ongoing operating cost, users, including municipal contractors, are charged at either \$2,400 per year or \$250 per month.

A Rover System -

- Users are responsible for their own equipment including a GPS system and wireless network access (i.e. Bell, Roger, Telus or etc)



metro
vancouver

Require More Information?

- For service access, contact service operator
Global Minds Inc. (604) 675-2000
- For general information, visit Metro Vancouver website
<http://www.metrovancouver.org>
- For technical information, visit CRGB website
<http://ilmbwww.gov.bc.ca/bmgs/>



metro
vancouver

Questions ?



metro
vancouver

www.metrovancouver.org